

PROCESS WEIGHING

COUNTING SCALES

BENCH SCALES

CHECKWEIGHERS

CONVEYOR SCALES

FLOOR SCALES

INDICATORS

RAILROAD SCALES

SOFTWARE

TRUCK SCALES

JUNCTION BOXES

SIGNAL PROCESSING

FORKLIFT SCALES

MONORAIL SCALES

PRINTERS

REMOTE DISPLAYS

Avery Weigh-Tronix  
Truck Scales



Avery Weigh-Tronix

# AVS-7

## Automated Vehicle Scale Controls

Keep your vehicle scale operating efficiently and smoothly without a dedicated operator. The user-friendly AVS-7 unattended terminal allows drivers to complete weighing transactions without leaving their vehicle.



The Avery Weigh-Tronix AVS-7 provides drivers with fully-automated 24/7 scale access. This access maximizes facility use and lowers costs, since a scale operator is not needed.

## Maximize use of your facility around the clock



### Applications

The AVS-7 is ideal for many applications where 24/7 scale access is desirable:

- Agriculture
- Aggregate
- Asphalt
- Feed mill
- Fertilizer
- Food
- Manufacturing
- Mining
- Recycling
- Solid waste
- Transfer station
- Transportation

## AVS-7 AUTOMATED VEHICLE SCALE CONTROLS

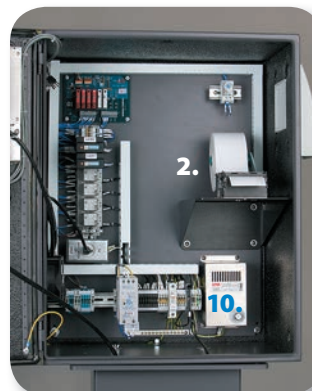
The AVS-7 consists of an automated control console – an advanced E1310 indicator and thermal printer inside a NEMA 4 enclosure. For more flexibility, options such as an ID card reader, QWERTY keyboard, vehicle detection and intercom can be added. The AVS-7 is one component of an integrated unattended truck scale system from Avery Weigh-Tronix.

### Standard Components

1. E1310 indicator with sun visor
2. Thermal printer with extra-large paper roll
3. NEMA 4 enclosure
4. Locking access latches

### Optional Components

5. Sun shroud
  6. Proximity card reader
  7. Intercom
  8. QWERTY keypad
  9. Air intake/exhaust ports
  10. Heater
  11. Adjustable-height stand
- Insulated enclosure (*not shown*)





## Simple Operation

1. Driver moves onto scale
2. Driver swipes card or enters ID number and enters any requested data
3. Ticket is printed and information recorded to database
4. Driver exits

Secure transaction details are available for reports or transfer to other PC software applications such as MI Payload.

## Approvals

NTEP approved for legal-for-trade accuracy in all conditions and UL listed for safety assurance.



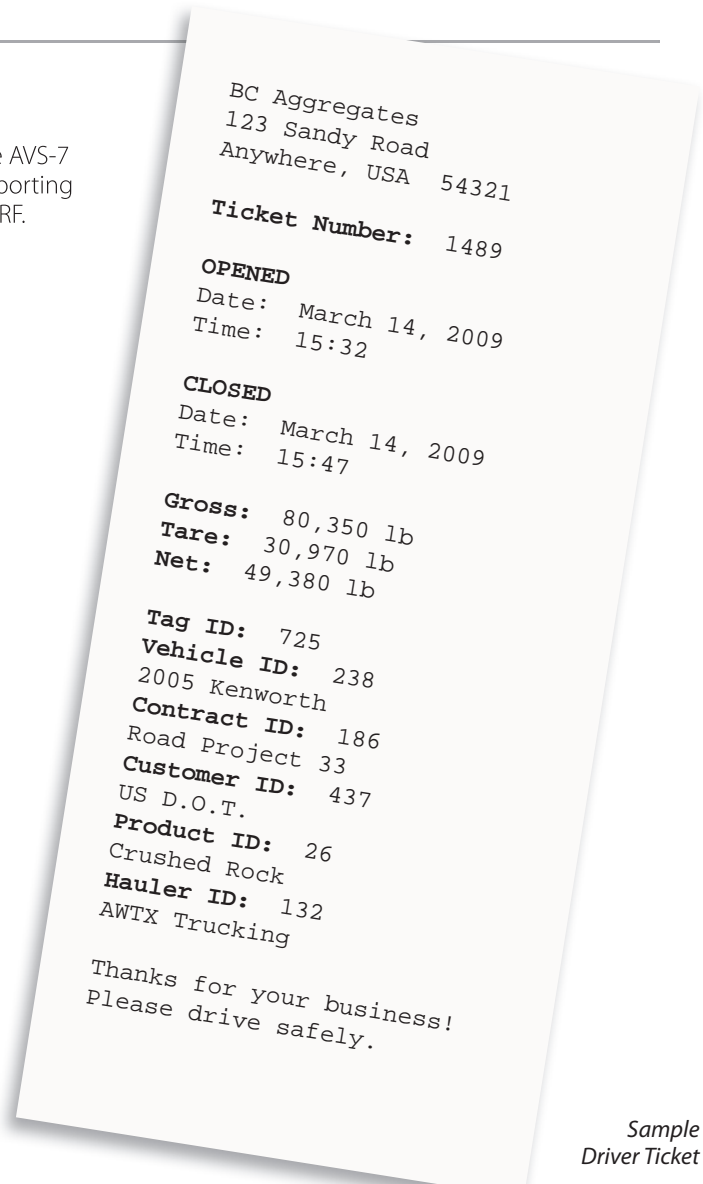
## Axle weigh mode

System can be configured to weigh each set of axles as driver enters scale. Traffic lights are used to control vehicle movement.

## E1310 Indicator/Controller

The E1310 is an advanced indicator/controller, and is the heart of the AVS-7 console. It features network capabilities, allowing monitoring and reporting via web, e-mail and FTP. It can connect to a LAN or WAN via wireless RF. Some features of the E1310 include:

- Reliable, accurate weighing
- Easy-to-read display
- Driver prompting
- Secure database via password protection
- Full network connectivity for remote communications
- Flexibility of multiple databases
- 100 available records in each ID database table
- Easy transfer of database files between E1310 and PC





## INSTALLATION & SITE OPTIONS

The AVS-7 control console is just one component of a complete unattended vehicle weighing system. Shown below is a typical installation with a variety of available site options.

1. **AVS-7** – Contains components required for processing vehicles on the scale. It is the interface with the truck driver and controls scale peripherals.
2. **Vehicle Detection Loop** – Detects vehicles approaching the scale and insures proper vehicle positioning before capturing weights.
3. **Barrier Gate** – Restricts unauthorized access to the site and controls vehicle movement.
4. **Truck Scale** – Can be installed in a pit or above ground on a slab or piers. For individual axle reading, multi-platform scales are preferred. Exclusive design features are what make Avery Weigh-Tronix truck scales #1 in the industry. These features add up to a truck scale of remarkable quality and value.
5. **Scale Guide Rails** – Protects against accidental drive-offs.
6. **Video surveillance** – Deters vandalism and allows remote viewing of the installation.
7. **Traffic Light** – Shows availability of the scale and directs vehicle movement.
8. **XR Remote Display** – Clear, comfortable viewing of scale information at considerable distances.



## ABOUT AVERY WEIGH-TRONIX

Avery Weigh-Tronix has been an active force in advancing the state of scale design since 1813. Its products are recognized for durability that exceeds general industry standards and performance that reflects the latest advances in technology. Through customer satisfaction, Avery Weigh-Tronix has grown rapidly and is one of the world's largest manufacturers of commercial and industrial scales.

# Avery Weigh-Tronix

[www.averyweigh-tronix.com](http://www.averyweigh-tronix.com)

*Avery Weigh-Tronix is an ITW company*



Avery Weigh-Tronix is a trademark of the Illinois Tool Works group of companies whose ultimate parent company is Illinois Tool Works Inc ("Illinois Tool Works"). Copyright © 2015 Illinois Tool Works. All rights reserved. This publication is issued to provide outline information only and may not be regarded as a representation relating to the products or services concerned. This publication was correct at the time of going to print, however Avery Weigh-Tronix reserves the right to alter without notice the specification, design, price or conditions of supply of any product or service at any time.

9/2013 (web) AVS-7\_L\_500402.indd  
AWT35-500402 Printed in USA